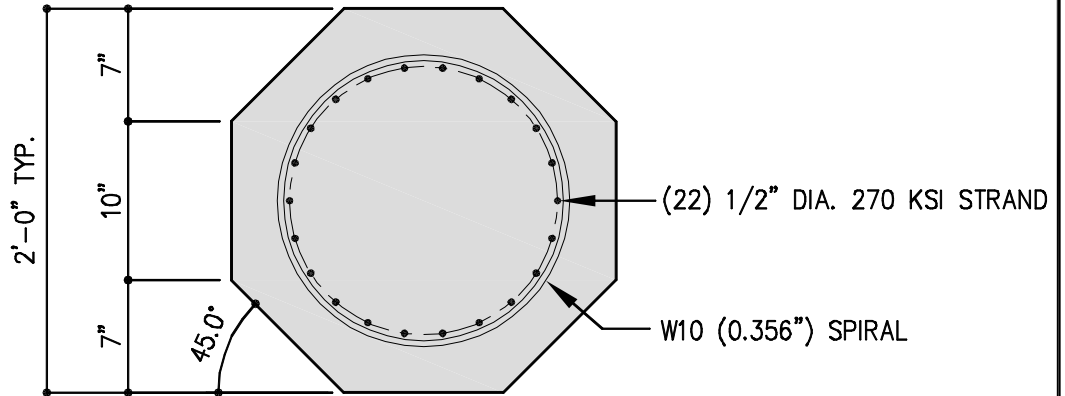




# 24" OCTAGONAL PILE P24



### NOTES:

1. PILE SECTION MAY HAVE SLIGHT SIDE DRAFT TO ALLOW FOR STRIPPING.
2. STANDARD COVER TO SPIRAL IS 3". FOR NON-MARINE APPLICATIONS THIS MAY BE REDUCED TO 2" IF THIS ASSISTS WITH REINFORCING REQUIREMENTS.
3. POSSIBLE STRAND LOCATIONS ARE INDICATED. ACTUAL NUMBER OF STRAND WILL BE GOVERNED BY FINAL DESIGN PRESTRESS DEMAND. CONSULT GPRM Prestress FOR ALTERNATE PRESTRESS OPTIONS.

### SECTION PROPERTIES:

	A in <sup>2</sup>	I in <sup>4</sup>	r in	S in <sup>3</sup>	v/S in	WT plf	CY plf
STANDARD UNIT	477	18160	6.17	1515	6.0	513	0.123

ISSUED:

REVISED:

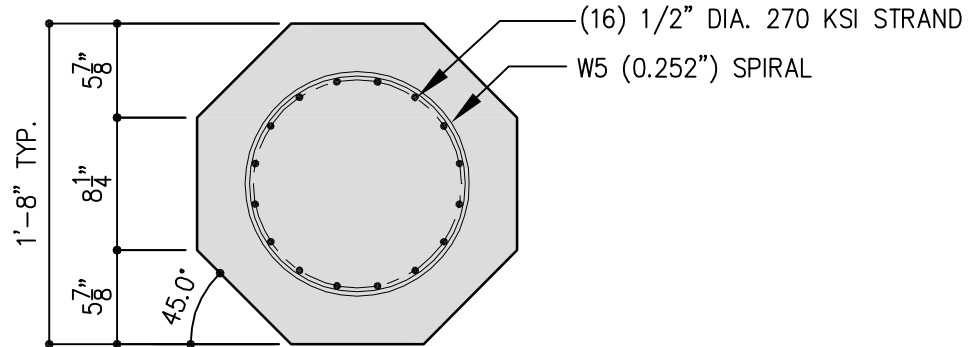
## OCTAGONAL PILE

SHEET:

**P24**



# 20" OCTAGONAL PILE P20



### NOTES:

1. PILE SECTION MAY HAVE SLIGHT SIDE DRAFT TO ALLOW FOR STRIPPING.
2. STANDARD COVER TO SPIRAL IS 3". FOR NON-MARINE APPLICATIONS THIS MAY BE REDUCED TO 2" IF THIS ASSISTS WITH REINFORCING REQUIREMENTS.
3. POSSIBLE STRAND LOCATIONS ARE INDICATED. ACTUAL NUMBER OF STRAND WILL BE GOVERNED BY FINAL DESIGN PRESTRESS DEMAND. CONSULT GPRM Prestress FOR ALTERNATE PRESTRESS OPTIONS.

### SECTION PROPERTIES:

	A in <sup>2</sup>	I in <sup>4</sup>	r in	S in <sup>3</sup>	V/S in	WT plf	CY plf
STANDARD UNIT	331	8755	5.14	876	5.0	356	0.085

ISSUED:

REVISED:

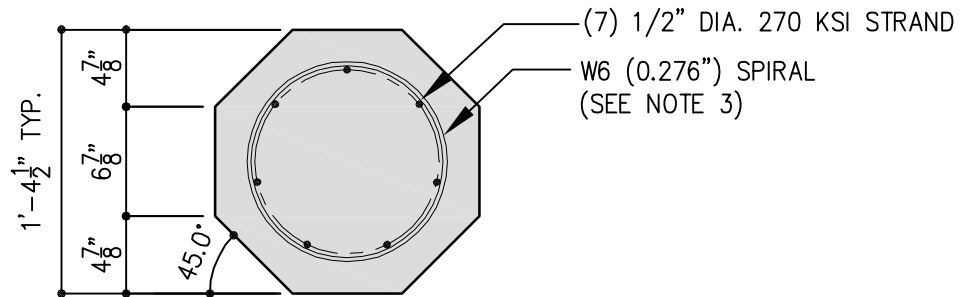
## OCTAGONAL PILE

SHEET:

## P20



# 16.5" OCTAGONAL PILE P16.5



## NOTES:

1. PILE SECTION MAY HAVE SLIGHT SIDE DRAFT TO ALLOW FOR STRIPPING.
2. STANDARD COVER TO SPIRAL IS 2". FOR MARINE APPLICATIONS INCREASE TO 3".
3. W6 SPIRAL WITH 85 KSI MIN YIELD HAS BEEN ADOPTED TO HELP ADDRESS SPACING CONCERNS FOR SDC C, D & E. CONSULT GPRM Prestress FOR POSSIBLE ALTERNATIVES.

## SECTION PROPERTIES:

	A in <sup>2</sup>	I in <sup>4</sup>	r in	S in <sup>3</sup>	V/S in	WT plf	CY plf
STANDARD UNIT	225	4057	4.24	491	4.13	242	0.058

ISSUED:

REVISED:

# OCTAGONAL PILE

SHEET:

# P16.5