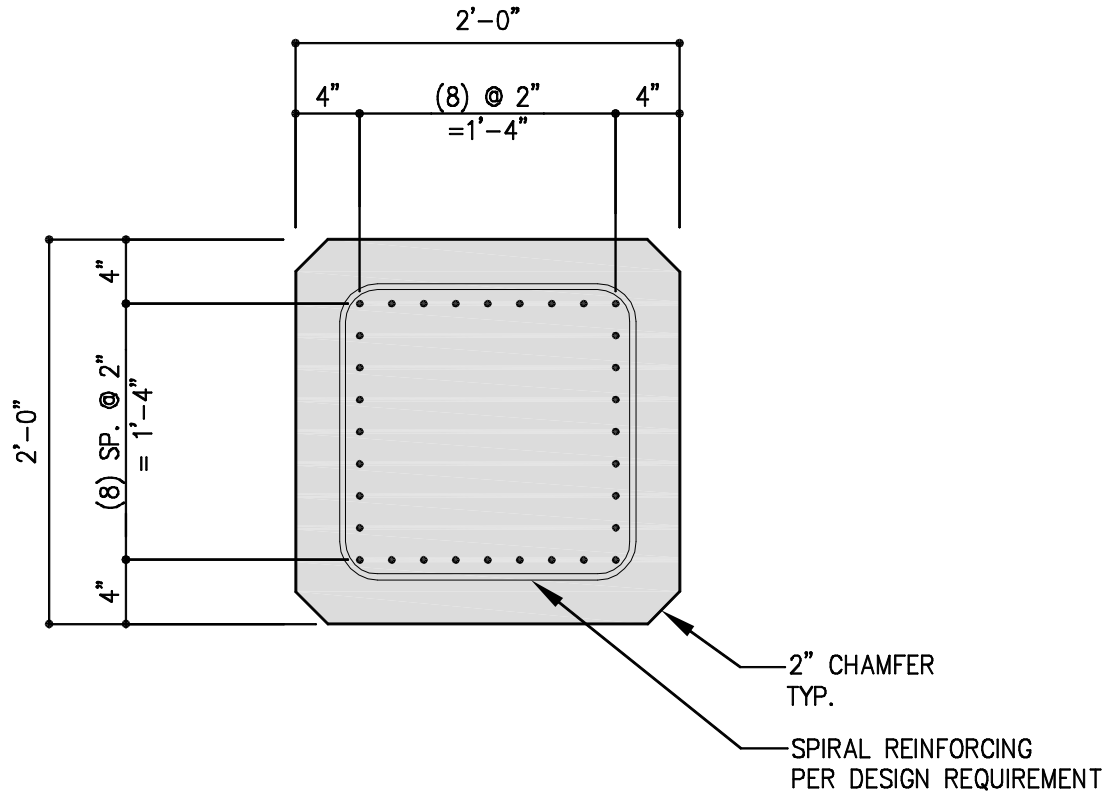




# 24" SQUARE PILE P24S



## NOTES:

1. PILE SECTION MAY HAVE SLIGHT SIDE DRAFT TO ALLOW FOR STRIPPING.
2. STANDARD COVER TO SPIRAL IS 3". FOR NON-MARINE APPLICATIONS THIS MAY BE REDUCED TO 2" IF THIS ASSISTS WITH REINFORCING REQUIREMENTS.
3. POSSIBLE STRAND LOCATIONS ARE INDICATED. ACTUAL NUMBER OF STRAND WILL BE GOVERNED BY FINAL DESIGN PRESTRESS DEMAND. CONSULT GPRM Prestress FOR ALTERNATE PRESTRESS OPTIONS.

## SECTION PROPERTIES:

	A in <sup>2</sup>	I in <sup>4</sup>	r in	S in <sup>3</sup>	v/S in	WT plf	CY plf
STANDARD UNIT	576	27648	6.93	2304	6.0	620	0.148

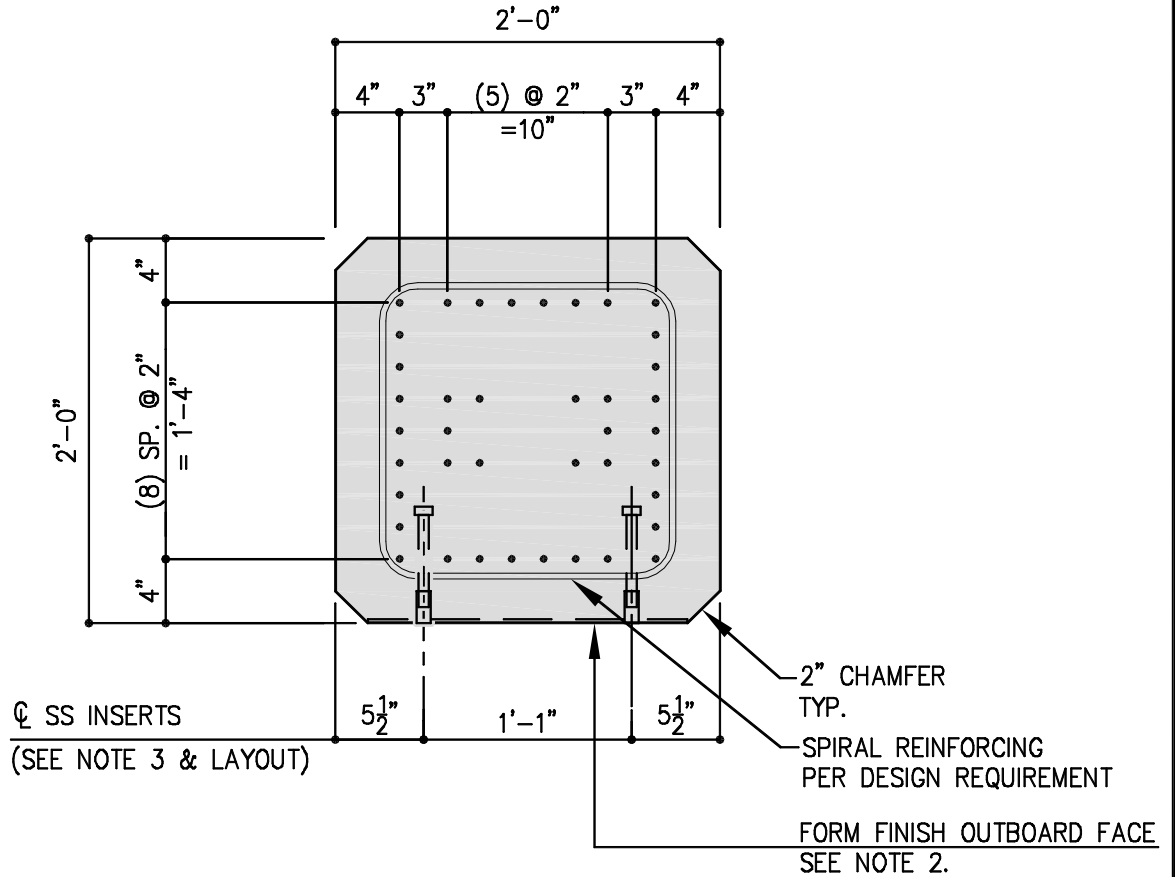
ISSUED:

REVISED:

# SQUARE PILE

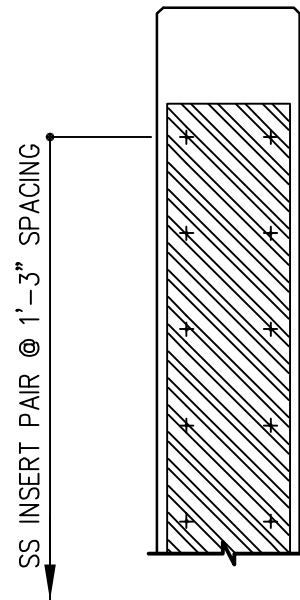
SHEET:

# P24S



## NOTES:

- SEE SHEET P24S FOR GENERAL NOTES, SECTION PROPERTIES, ETC..
- STAINLESS STEEL INSERTS SHOULD BE LOCATED AS INDICATED TO AVOID STRAND. INSERTS WILL BE NOMINALLY RECESSED TO ALLOW FOR SETTING HARDWARE & TEMPLATES.
- 7/8" DIA. INSERTS HAVE GENERALLY BEEN ADOPTED AS THE STANDRD SIZE HARDWARE FOR ATTACHING UHMW FACE PANELS.



INSERT LAYOUT

ISSUED:

REVISED:

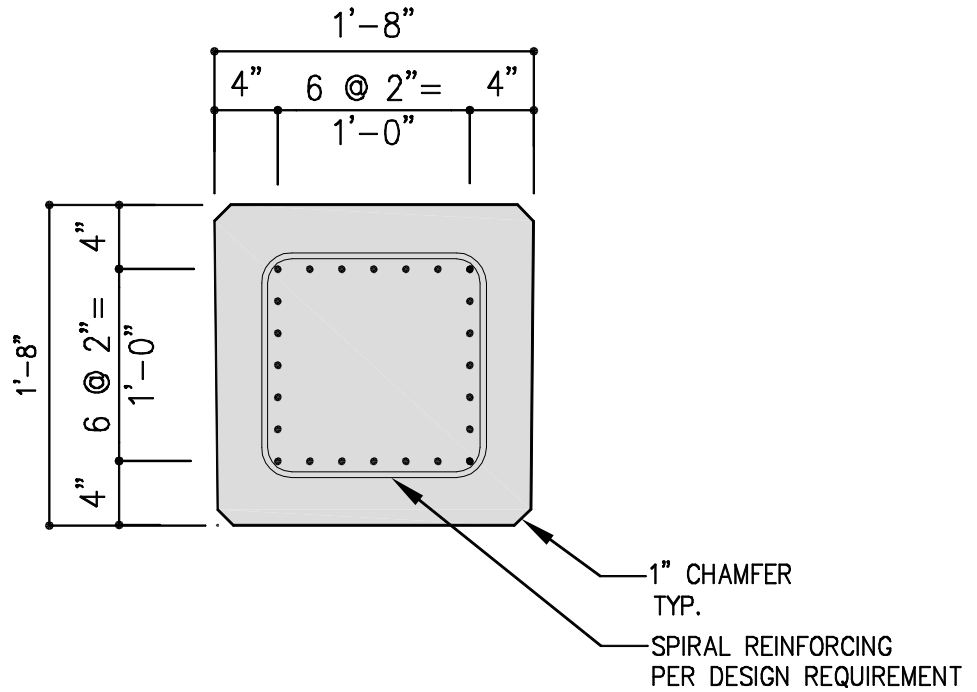
## SQUARE PILE

SHEET:

## P24F



# 20" SQUARE PILE P20S



## NOTES:

1. PILE SECTION MAY HAVE SLIGHT SIDE DRAFT TO ALLOW FOR STRIPPING.
2. STANDARD COVER TO SPIRAL IS 3". FOR NON-MARINE APPLICATIONS THIS MAY BE REDUCED TO 2" IF THIS ASSISTS WITH REINFORCING REQUIREMENTS.
3. POSSIBLE STRAND LOCATIONS ARE INDICATED. ACTUAL NUMBER OF STRAND WILL BE GOVERNED BY FINAL DESIGN PRESTRESS DEMAND. CONSULT GPRM Prestress FOR ALTERNATE PRESTRESS OPTIONS.

## SECTION PROPERTIES:

	A in <sup>2</sup>	I in <sup>4</sup>	r in	S in <sup>3</sup>	V/S in	WT plf	CY plf
STANDARD UNIT	400	13333	5.77	1333	5.0	431	0.103

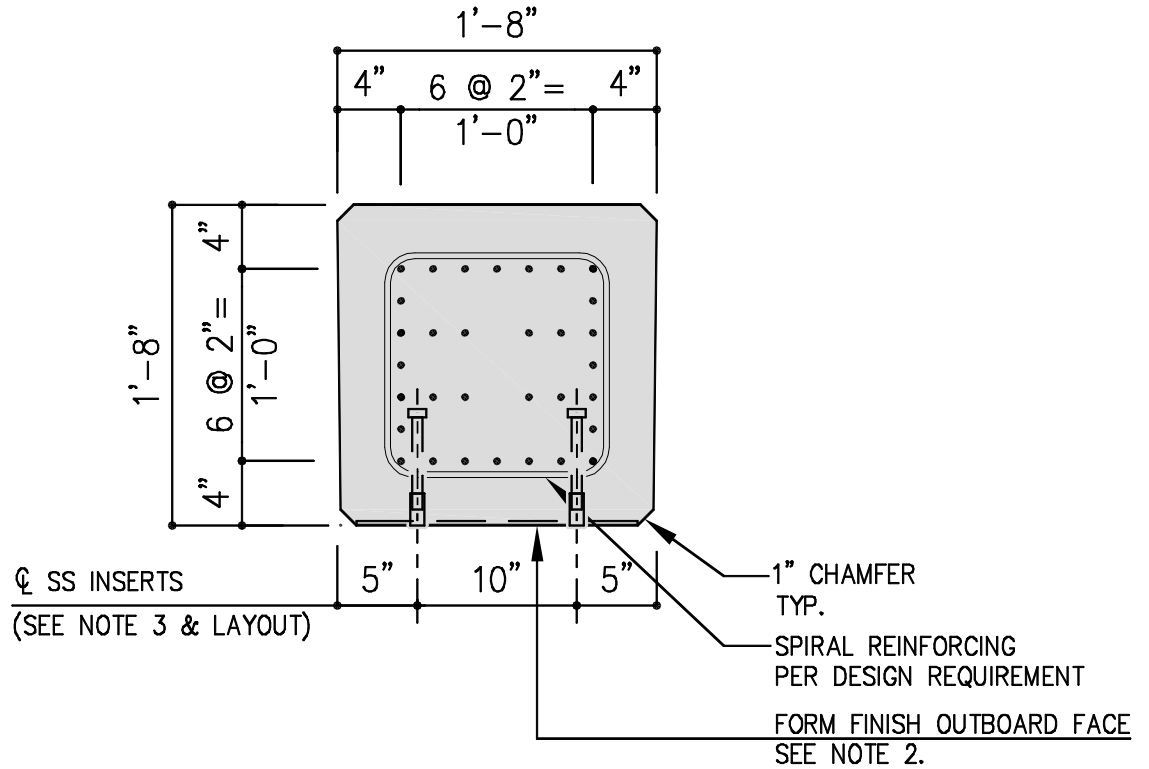
ISSUED:

REVISED:

# SQUARE PILE

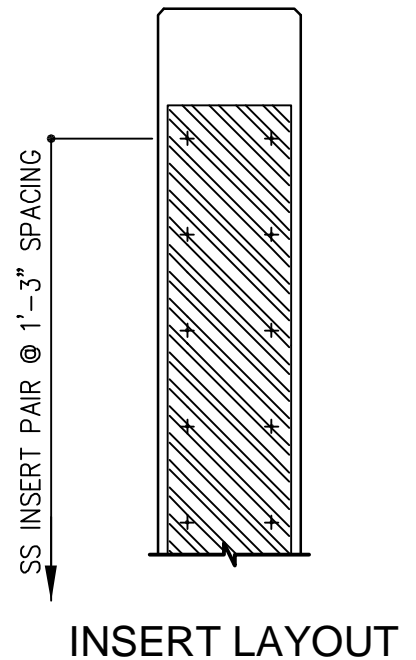
SHEET:

# P20S



### NOTES:

- SEE SHEET P20S FOR GENERAL NOTES, SECTION PROPERTIES, ETC.
- STAINLESS STEEL INSERTS SHOULD BE LOCATED AS INDICATED TO AVOID STRAND. INSERTS WILL BE NOMINALLY RECESSED TO ALLOW FOR SETTING HARDWARE & TEMPLATES.
- $\frac{7}{8}$ " DIA. INSERTS HAVE GENERALLY BEEN ADOPTED AS THE STANDRD SIZE HARDWARE FOR ATTACHING UHMW FACE PANELS.



ISSUED:

REVISED:

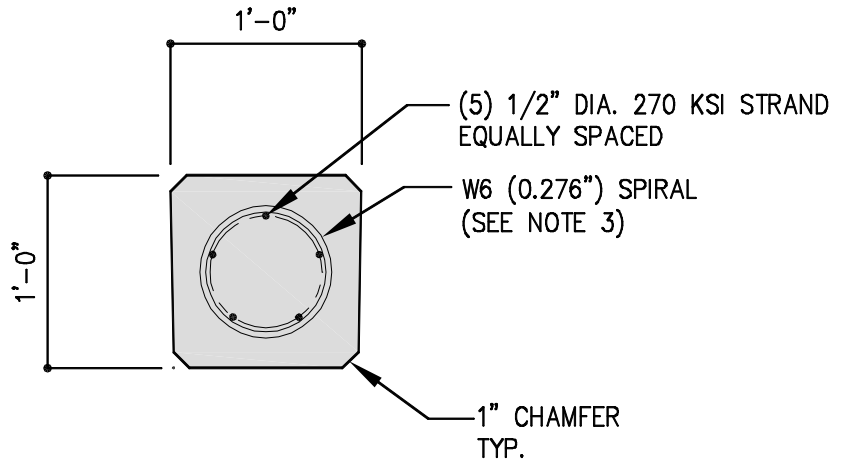
## SQUARE PILE

SHEET:

## P20F



# 12" SQUARE PILE P12S



## NOTES:

1. PILE SECTION MAY HAVE SLIGHT SIDE DRAFT TO ALLOW FOR STRIPPING.
2. STANDARD COVER TO SPIRAL IS 2". THE P12S IS GENERALLY NOT RECOMMENDED FOR MARINE APPLICATIONS AS COVER REQUIREMENTS BECOME RESTRICTIVE.
3. W6 SPIRAL WITH 85 KSI MIN YIELD HAS BEEN ADOPTED TO HELP ADDRESS SPACING CONCERNS FOR SDC C, D & E. CONSULT GPRM Prestress FOR POSSIBLE ALTERNATIVES.

## SECTION PROPERTIES:

	A in <sup>2</sup>	I in <sup>4</sup>	r in	S in <sup>3</sup>	V/S in	WT plf	CY plf
STANDARD UNIT	144	1728	3.46	288	3.0	155	0.037

ISSUED:

REVISED:

# SQUARE PILE

SHEET:

# P12S