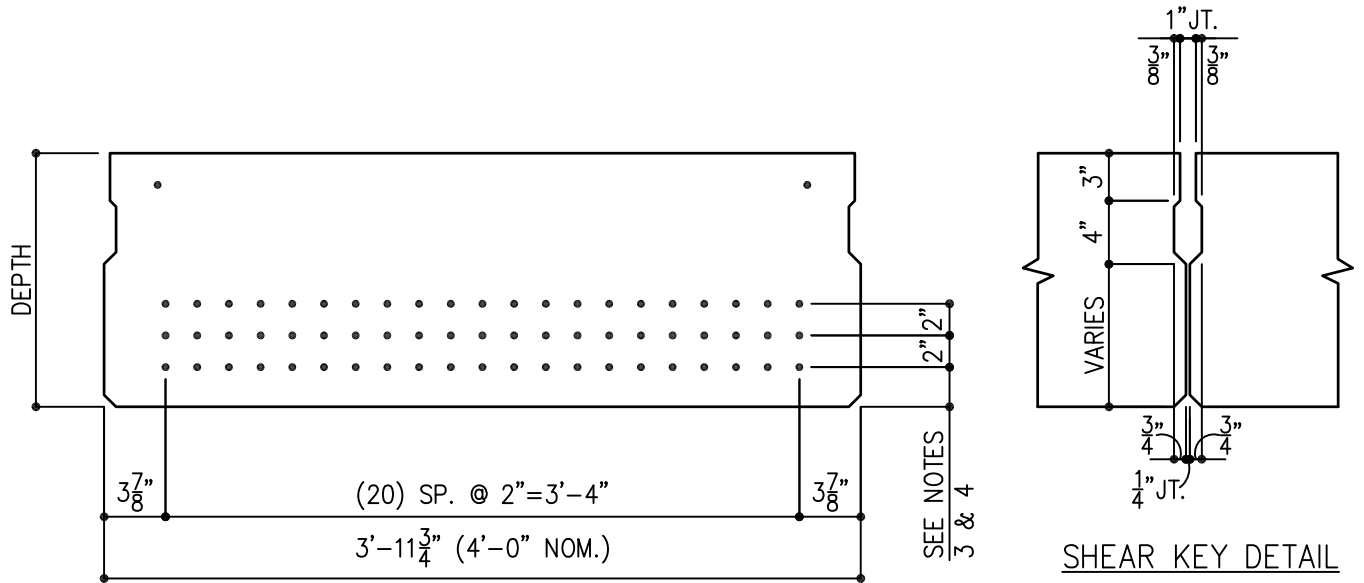




# HAWAII BRIDGE PLANK



SEE NOTES  
3 & 4

SHEAR KEY DETAIL

## NOTES:

1. STANDARD BRIDGE PLANK SECTIONS ARE AVAILABLE IN 2" INCREMENTS FROM 10" THICK. SIMILAR SECTIONS ARE UTILIZED FOR WHARF DECK UNITS.
2. SHEAR KEY DETAIL IS STANDARDIZED FOR ALL SECTIONS AND BASED ON AASHTO/PCI STANDARDS.
3. POSSIBLE STRAND LOCATIONS ARE INDICATED IN BOTTOM ROW. SUBSEQUENT ROWS ARE AT 2" SPACING. CONSULT GPRM Prestress FOR ALTERNATE PRESTRESS OPTIONS.
4. CENTROID OF BOTTOM STRAND IS GOVERNED BY COVER, REINFORCING AND TOLERANCE REQUIREMENTS. 2 1/4" IS THE RECOMMENDED MINIMUM.
5. VOIDED PLANKS SHOULD BE CONSIDERED FOR DEEPER SECTIONS.
6. FOR NON-STANDARD WIDTHS AND SECTIONS CONSULT GPRM Prestress FOR OPTIONS.

## SECTION PROPERTIES

DEPTH	A in <sup>2</sup>	I in <sup>4</sup>	Y <sub>b</sub> in	Y <sub>t</sub> in	S <sub>b</sub> in <sup>3</sup>	S <sub>t</sub> in <sup>3</sup>	Vol/ Surf.	WT plf
10"	469	4000	5.0	5.0	800	800	4.1	505
12"	565	6912	5.97	6.03	1152	1152	4.8	608
14"	660	10976	6.97	7.03	1568	1568	5.4	711
16"	756	16384	7.97	8.03	2048	2048	6.0	814
18"	851	23328	8.97	9.03	2592	2592	6.5	916
20"	947	32000	9.97	10.03	3200	3200	7.1	1019
22"	1042	42592	10.97	11.03	3872	3872	7.5	1122
24"	1138	55296	11.94	12.06	4608	4608	8.0	1225

ISSUED:  
  
REVISED:

# HAWAII BRIDGE PLANK

SHEET:  
**BP**