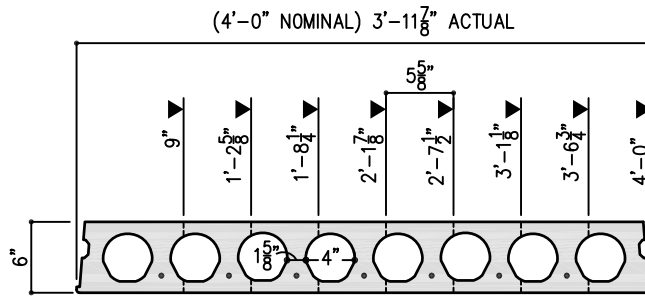




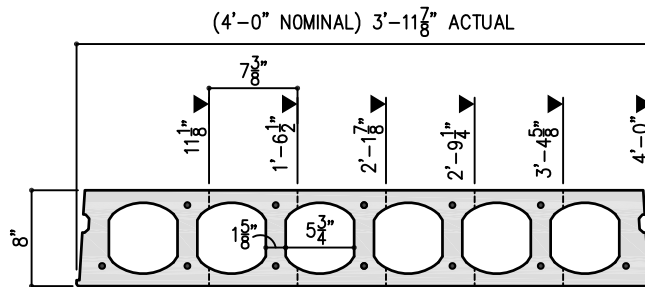
DYNACORE PLANK RIP WIDTHS DC6, DC8, DC10



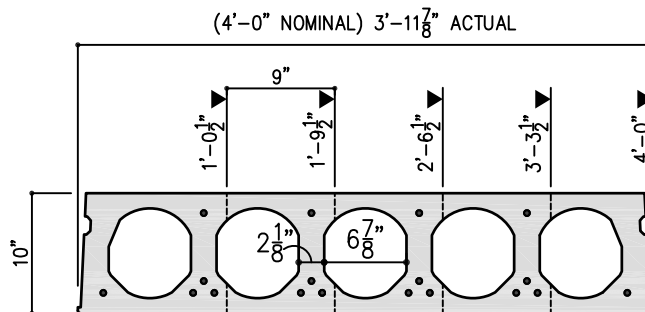
DC6



DC8



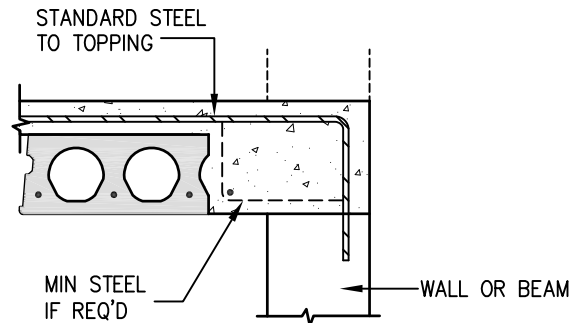
DC10



NOTES:

1. NOMINAL RIP WIDTHS, AS DETAILED, ARE TO BE USED FOR DYNACORE FRAMING LAYOUTS.
2. C.I.P POUR STRIPS SHALL BE USED TO COMPLETE THE FRAMING. THESE SHOULD TYPICALLY BE PLACED AT THE END OF THE RUN, ADJACENT TO A BEAM OR WALL.
3. POUR STRIP WIDTHS CAN GENERALLY BE LIMITED TO THE CORE SPACING OF THE DYNACORE PRODUCT BEING USED.
4. RIPPED UNITS CAN PRODUCE CAMBER AND SWEEP ANOMALIES. WIDER POUR STRIPS AND/OR ADJACENT RIPPED UNITS MAY BE CONSIDERED IN LIEU OF VERY NARROW UNITS.
5. ALTERNATE RIP WIDTHS MAY BE USED UNDER SPECIAL CIRCUMSTANCES. CONSULT GPRM PRESTRESS.

DETAIL:



ISSUED:

REVISED:

HAWAII DYNACORE™ PLANK

SHEET:

DC1.0