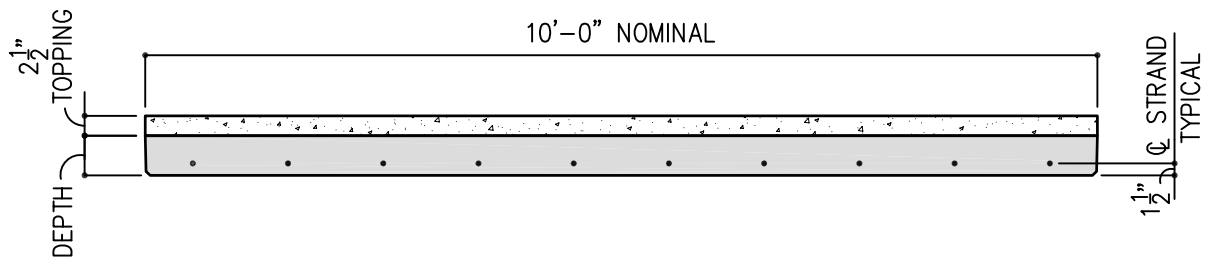




PRESTRESSED PLANK



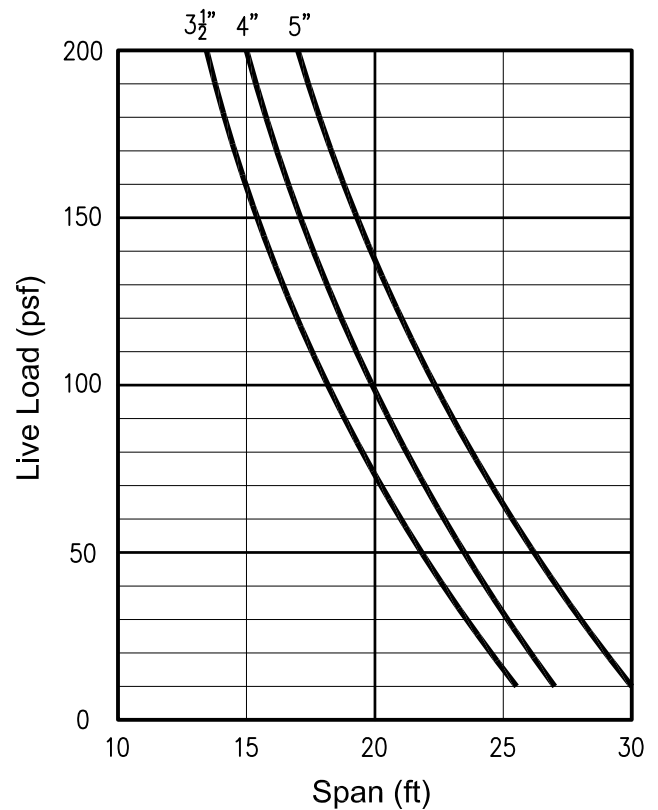
SECTION PROPERTIES

| STANDARD UNIT | A in ² | I in ⁴ | Y _b in | S _b in ³ | St in ³ | WT plf | WT psf | COMPOSITE UNIT | A in ² | I in ⁴ | Y _b in | S _b in ³ | St in ³ | WT plf | WT psf |
|---------------|-------------------|-------------------|-------------------|--------------------------------|--------------------|--------|--------|----------------|-------------------|-------------------|-------------------|--------------------------------|--------------------|--------|--------|
| 3 1/2" | 420 | 429 | 1.75 | 245 | 245 | 452 | 45.2 | 3 1/2" | 665 | 1949 | 2.9 | 683 | 3022 | 775 | 77.5 |
| 4" | 480 | 640 | 2.0 | 320 | 320 | 517 | 51.7 | 4" | 725 | 2481 | 3.1 | 801 | 2751 | 840 | 84.0 |
| 5" | 600 | 1250 | 2.5 | 500 | 500 | 646 | 64.6 | 5" | 845 | 3823 | 3.6 | 1066 | 2706 | 969 | 96.9 |

NOTES:

- LOAD/SPAN TABLE:** ALLOWABLE LIVE LOAD CAPACITY SHOWN IS IN ADDITION TO SDL OF 15 PSF. SPANS SHOWN ARE FOR SHORED CONSTRUCTION. (SEE DESIGN COMMENTARY)
- STANDARD REINFORCING:** PRESTRESSED PLANKS UNDER 12FT. WIDE REQUIRE NOMINAL REINFORCING ONLY, DESIGNED TO ADDRESS PRODUCTION AND HANDLING REQUIREMENTS. (SEE PLANK REINFORCING DETAILS)
- CONSULT GPRM Prestress FOR AVAILABILITY OF SECTION WIDTHS, THICKNESS AND EFFECTS ON ECONOMY. CUSTOM PLANK TO ANY THICKNESS CAN BE PRODUCED.

LOAD / SPAN TABLE



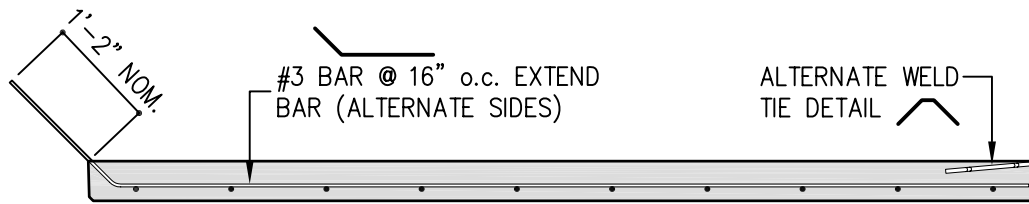
ISSUED:

REVISED:

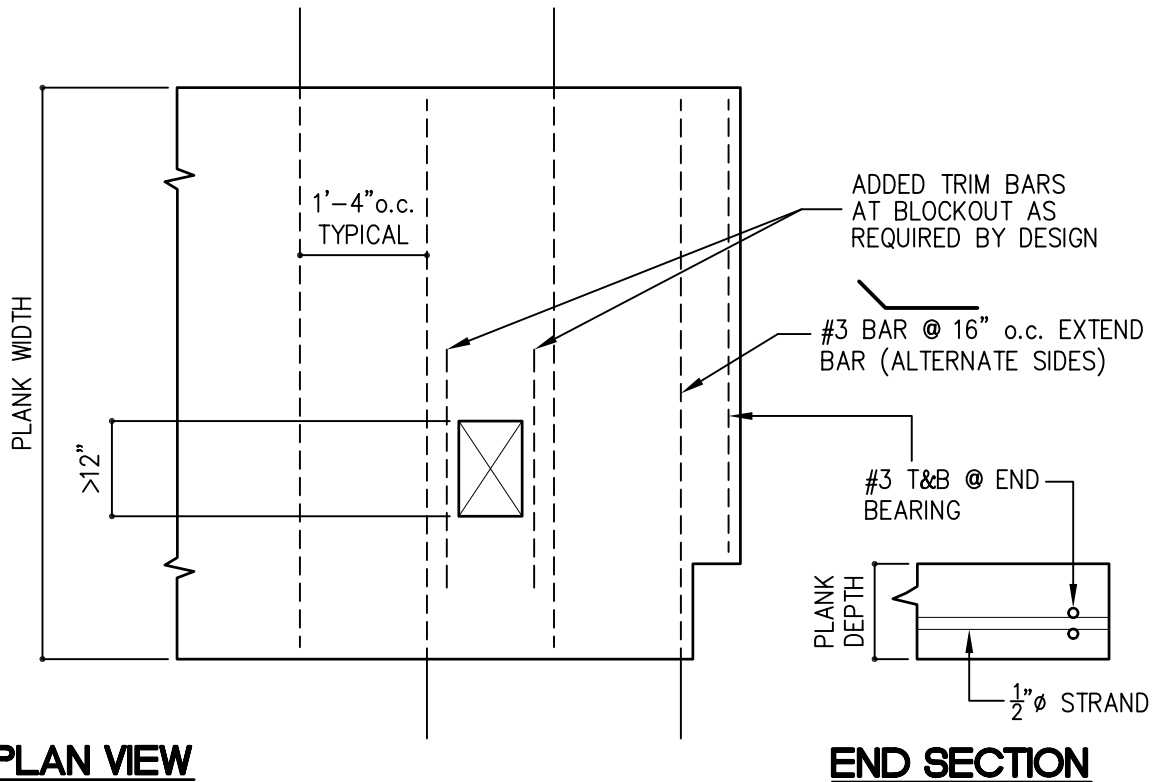
PRESTRESSED PLANK

SHEET:

PP



SECTION



PLAN VIEW

END SECTION

NOTES:

1. NOTCHES FOR STANDARD END BEARING CONDITIONS DO NOT REQUIRE ADDITIONAL REINFORCING TO BE DETAILED.
2. CAST IN BLOCKOUTS UNDER 12" DIMENSION TYPICALLY DO NOT REQUIRE ADDITIONAL TRIM STEEL.
3. #3 BEND-DOWN TIE BARS AND/OR WELD TIES MAY BE REQUIRED FOR ERECTION STABILITY OR TO PROVIDE OVERALL "ROBUSTNESS" OF THE PLANK FLOOR SYSTEM. THEY ARE NOT REQUIRED FOR GENERAL DESIGN CONFORMANCE.

ISSUED:

REVISED:

PRESTRESSED PLANK

SHEET:

PPR